

## **2025 Healthcare Science Career Levels 2-4 Undergraduate Training Bursary - Applicant Guidance**

This bursary is for Healthcare Science Support Workers (on AfC Band 4 and below) employed by NHS Scotland, seeking a funding contribution towards an undergraduate-level qualification, as part of their development within Career Framework levels 2–4. in alignment with the [Development and Education Framework for Levels 2-4](#).

This competitive bursary support is limited to a maximum of £2,500 and is for undergraduate level education and training which takes place within the financial year 2025-26. Please note this funding is for one year only, from the commencement of the agreed award programme in the financial year 2025-26. If funding is required for subsequent years of **undergraduate** study, then please note this must be re-applied for in future financial years, subject to this bursary being available, and is not guaranteed.

1. Please ensure you meet the award criteria for consideration of applications, see **Appendix 1**.
2. You **must** get your line manager and supervisor's agreement to this application before commencing your award application.
3. Applications are through a dedicated [MS Forms Application](#) which will guide you through the application process.

**PLEASE NOTE THE MS FORM CANNOT BE SAVED AND RETURNED TO LATER.  
ENSURE YOU'RE READY TO COMPLETE THE APPLICATION PRIOR TO STARTING.**

**Before starting the award application, please make sure:**

- You have the details of your intended programme (e.g. title, provider, start date and fee cost).
- You have your line manager and supervisor's details (name, job title & email address) and agreement from both for you to participate in the intended programme.
- You are aware of the Healthcare Science Support Worker Career Framework (Levels 2-4) available on our [HCS training website](#)
- If successful you agree to complete the [NTN MS Forms](#) to register your details with the NES HCS team, and receive your National Training Number / update your details as applicable.

- If successful you and your supervisor **BOTH** agree to participate in NES HCS QA processes, including [Quality Assurance surveys](#), [Annual Review of Competency Progression \(ARCP\) monitoring](#), and [Exit Survey](#).
- If successful, your department will complete a [Centre recognition of Healthcare Scientist training in Scotland self-assessment](#) if not already completed.

More details about our Quality Assurance requirements can be found on our [NES HCS website](#). Ensure your supervisor and line manager understand these requirements and agree to complete them prior to completing an application.

**WE SUGGEST YOU COMPLETE A WORD DOCUMENT IN PREPARATION, ANSWERING THE 5 KEY QUESTIONS BELOW, THEN COPY ANSWERS TO THE [MS Forms Application](#)**

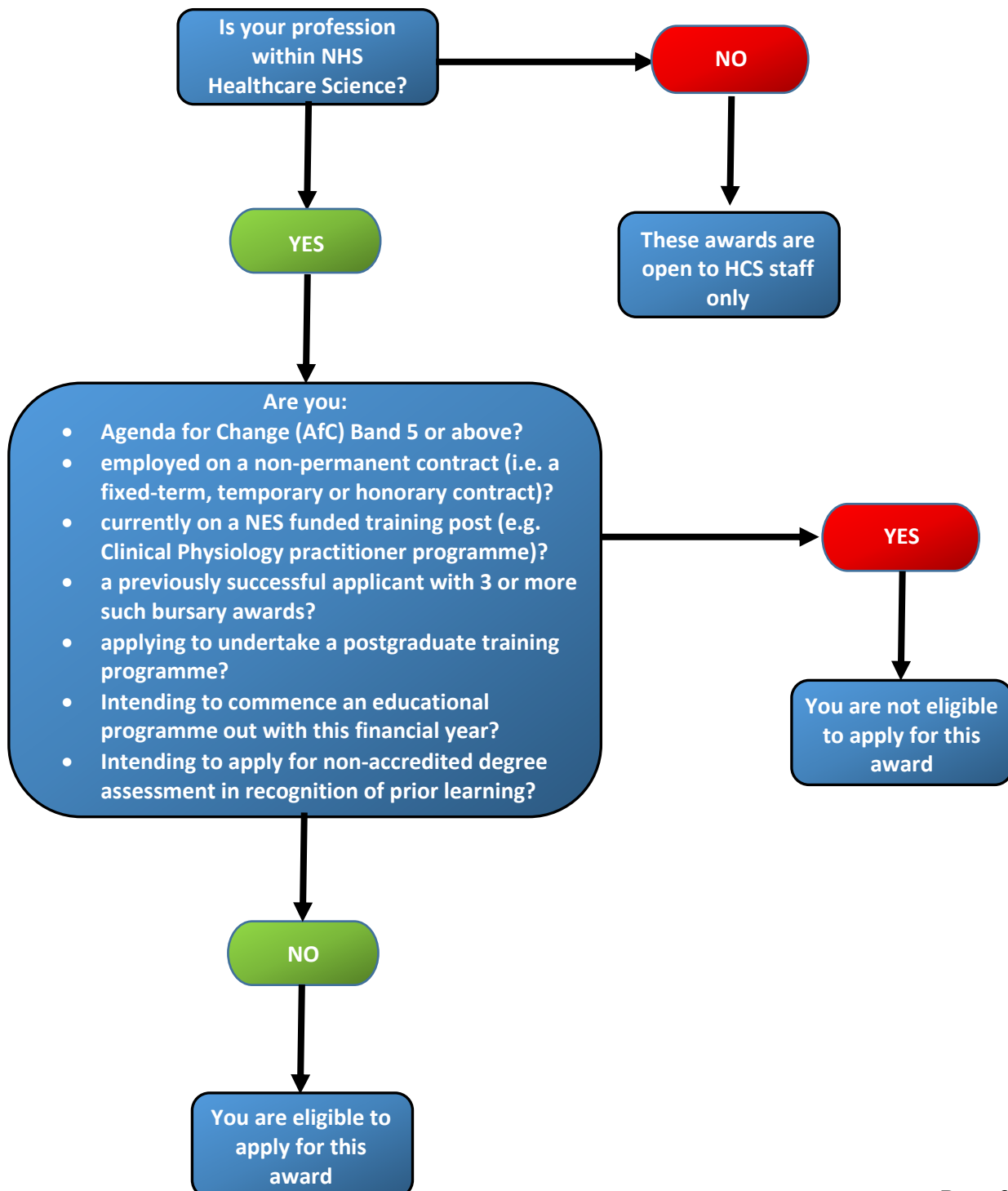
The final scored section of the application asks for responses to the five questions stated below. Please keep your answers to each question as concise as possible, but ensure that you demonstrate how your proposed learning and development aligns with the 4-pillars of practice within the [Development and Education Framework for Levels 2-4 Healthcare Science Healthcare Support Workers](#). Please see **Appendix 2** for the scoring criteria and further guidance notes.

1. Have you explored other avenues of funding for the training programme?
2. How does this training programme align with your personal career aspirations in line with the pillar of 'Clinical Practice'?
3. How does this training programme align with the pillar of practice 'Facilitation of Learning'?
4. How does this training programme align with the pillar of practice 'Leadership'?
5. How does this training programme align with the pillar of practice 'Service Improvement'?

**\*\*\* PLEASE NOTE: Applications go live on Monday 21<sup>st</sup> July 2025, 08:00, and will close on Friday 15<sup>h</sup> August 2025, 17:00 \*\*\***

## Appendix 1

### Eligibility Criteria for consideration of applications for NES Healthcare Science Levels 2-4 Undergraduate Training Bursary 2025



## **Appendix 2**

### **Scoring criteria and applicants guide**

#### **Scoring Criteria (used by NES and external assessors):**

Think about how you would score your own application; this is how the assessors will:

- 0 - Application does not address the question
- 1 - Application makes a weak case in addressing the question
- 2 - Application makes a reasonable case in addressing the questions with evidence of effort to develop the applicant professionally
- 3 - Application makes a strong case, with a clear realistic plan that utilises the educational solutions for the benefit of the applicant and service

Consider the impact of the specific undergraduate programme you have chosen prior to answering the questions in the application. Tell us how the addition of this intended programme will impact your future development, and how it aligns with both your personal career aspirations and the four pillars of practice, to justify the financial award towards it. A CV, elements of a job description, or a list of the programme modules are not an indication of your specific development plan, or the impact your programme will have. Mandatory training and training which is already a requirement of your role will not be considered in the scoring of this award.

Write your own application. Be concise and brief but make sure you cover the questions asked. Importantly, do not share or recycle text from others, from previous applications or other sources (e.g. answers generated from Artificial Intelligence). Plagiarism may result in the application being rejected.