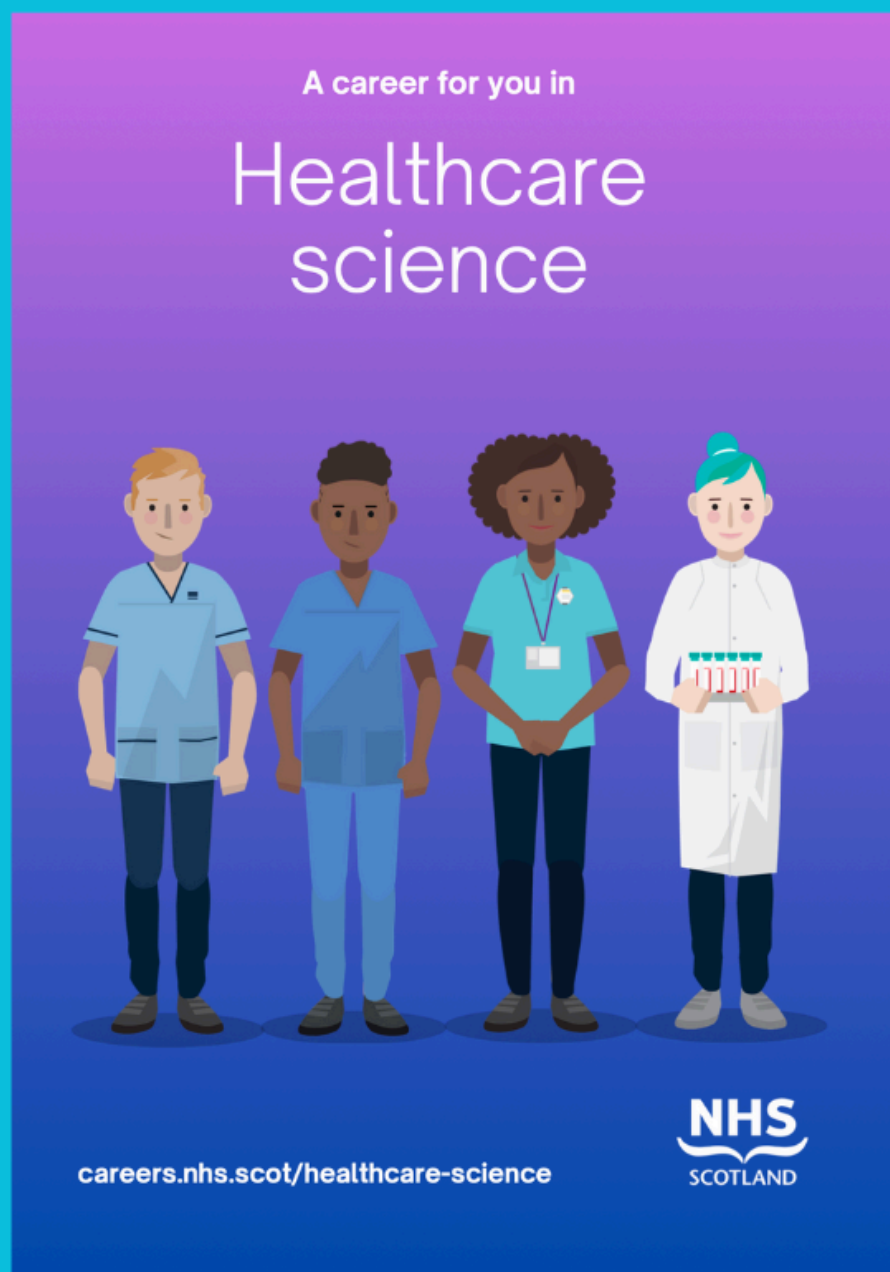


Careers in Healthcare Science



Choosing a healthcare science career

Healthcare scientists work across the NHS in locations including:


- hospital theatres
- health centres
- decontamination units
- hospital mortuaries
- inpatient and outpatient clinics
- hospital laboratories
- patients' homes
- GP surgeries
- workshops
- hospital emergency departments

You could be a biomedical scientist, analysing a blood sample to help a patient receive an accurate diagnosis or a blood transfusion.

As a bioinformatician, you'd analyse biological data to support the delivery of patient care.

Maybe you'd like to work as a clinical photographer, taking digital images to record and monitor a patient's medical condition.

You could be a respiratory physiologist using specialist equipment to investigate a patient's breathing problems.



Innovative and diverse roles

There are many routes to a rewarding career at different levels in all areas of healthcare science.

These include Modern Apprenticeships, entry-level support roles, and training programmes for healthcare science practitioners and clinical scientists.

- Healthcare science assistant practitioner**
Support worker roles - entry-level qualifications, Modern Apprenticeships, and undergraduate degree-level opportunities.
- Healthcare science practitioner**
Graduate-level roles such as biomedical scientist, clinical technologist, and clinical physiologist.
- Healthcare science associate practitioner**
Support worker roles - entry-level qualifications, Modern Apprenticeships, and undergraduate degree-level opportunities.
- Clinical scientist**
Postgraduate-level roles.
- Consultant healthcare scientist**
Postgraduate, doctoral and higher-level professional qualifications.

03 04

Ready to discover some of the healthcare science careers you can choose in the NHS? Check out our new career guide!

